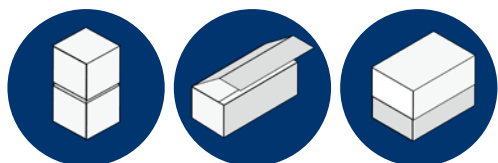


BOX LINE TAPER

Automatic production of raw boxes
from cardboard blanks

Sealing tape machine BLT 200



BLT 200
up to 40
products/min



Technical data



KOLBUS BOX LINE TAPER BLT 200

Benefits:

- The machine is used for uprighting punched and grooved cardboard
- Coupled in-line with BLW 200 Wrapper
- Fold-up station
- 4 hot sealing tape applicators
- Automated format set-up

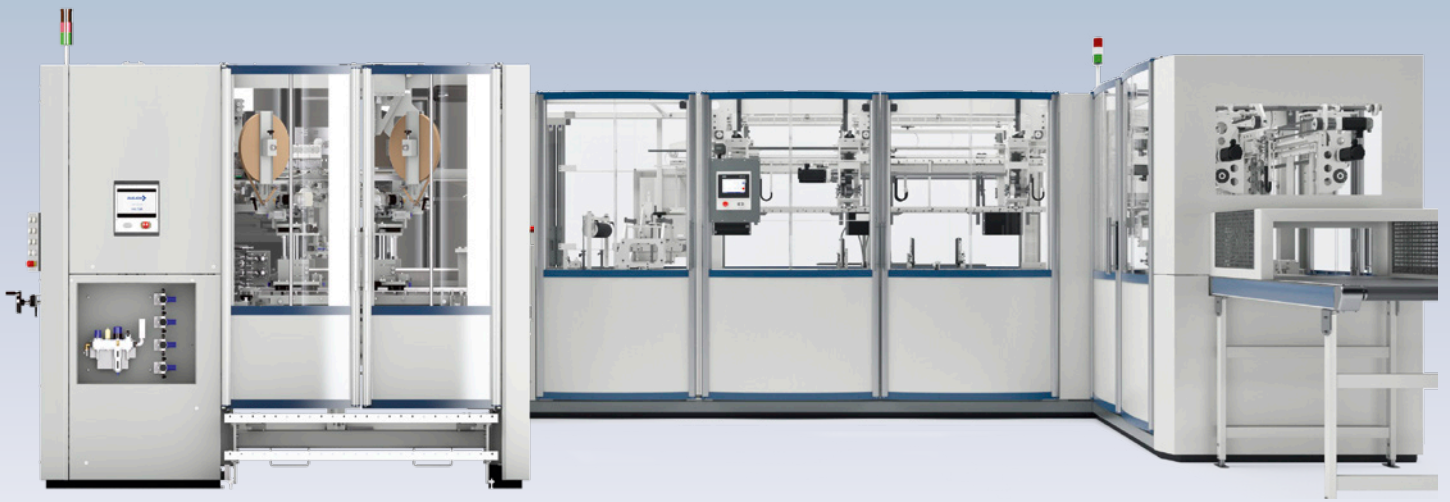
Standard equipment BLT 200

- Copilotsystem mit Touchscreen
- Choice of production mode
- Operator guided production changes
- Automatic format settings
- Operating instructions
- Product counter (Job, shift and start/stop counter)
- Indication of machine and material flow malfunctions
- Operator guided malfunction elimination
- Cardboard feeder
- Upright channel
- 4 heat seal band stations
- 2 sets of knives (4 pcs. each)
- 2 sets of counter cutters (4 pcs. each)
- Delivery height 1,000 mm
- Servo-controlled drive technology based on Siemens SIMOTION D
- Smart Line Module for feeding back drive energy into the production line net-work
- Safety standard in accordance with EC directives and standards

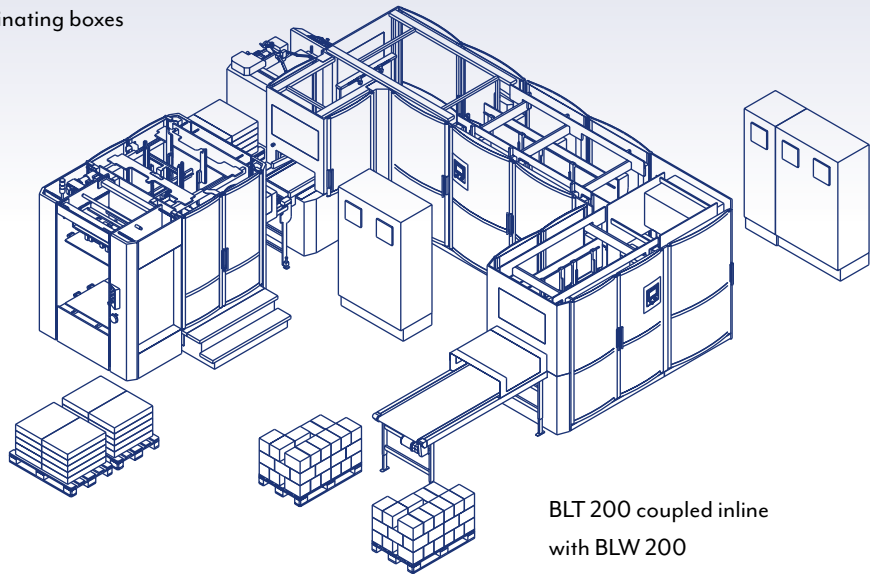
Remote Service Gateway / Coupling with type RSG 800

- Remote Service Gateway / Coupling with type RSG 800.B





BLT 200 and Box Line Wrapper BLW 200 for forming and laminating boxes



BLT 200 coupled inline with BLW 200

Alternative equipment

Delivery unit

- o Inline coupling with Box Line Wrapper, type BLW 200
- o Delivery via conveyor belt, type KT.L 700
- o Dimensions of KT.L 700:
Length 1500 mm, Width 750 mm, Height 1000 mm
(Delivery unit to be provided by customer)

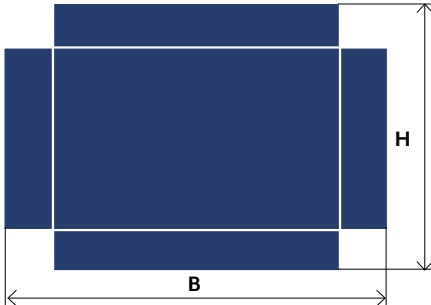


Box Line Taper BLT 200

Technical data

Size range cardboard blanks

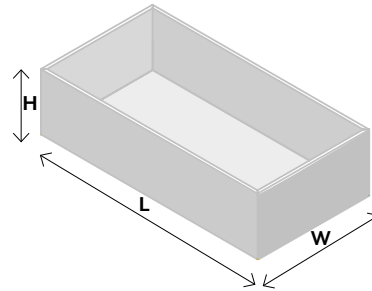
- o Height cardboard H: min. 140 mm / max. 525 mm
- o Width cardboard W: min. 140 mm / max. 735 mm
- o Thickness cardboard: min. 1 mm / max. 3 mm



Size range box

- o Length box L: min. 56 mm / max. 570 mm
- o Width box W: min. 56 mm / max. 360 mm
- o Height box H: min. 20 mm / max. 170 mm
- o Thickness: min. 1.0 mm / max. 3.0 mm

The interior dimensions of the box depend on the cardboard thickness



Mechanical speed:

- o up to 40 cycles/min
 - o for box height > 135 mm: max.: 25 cycles/min
- Net production is subject to sizes, materials etc.

The customer has to provide:

- o Factory line pressure 6 bar
- o Compressed air supply see extra sheet

Electrical equipment:

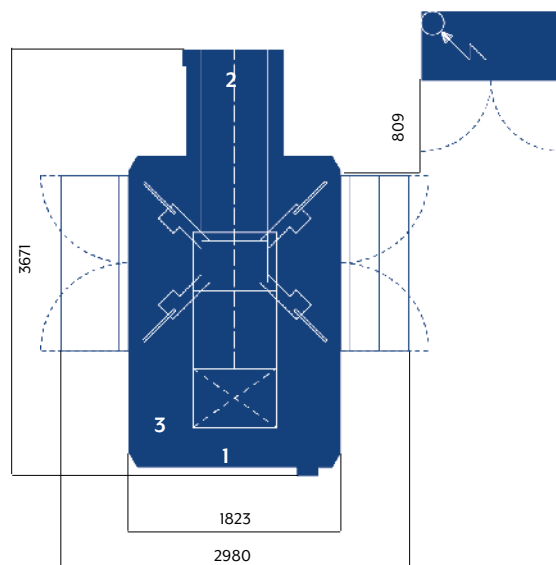
- o 3 phase, 400 volt / N / PE, 50 cycles

Machine dimensions

- o Length 3,700 mm
- o Width 3,000 mm
- o Höhe 2,700 mm

Weight 8.500 kg

Footprint BLT 200



- 1 Infeed board blanks BLT 200
- 2 Delivery with infeed into BLW 200
- 3 Connection compressed air